

Contents

	Scope of delivery	3
1	Short Instruction	4
2	Installation	4
3	Configuration	5
4	Language	5
5	Contact with the Connected LT	6 - 8
5.1	Establishing a Back Up of the Data	8
5.2	Writing Data into the Device	8
Appendix Help for Problem Solving		9 - 11
a	Accessing the interface configuration	9
b	Configuration of serial interface	10
c	Modifying the parity of the remote display software	11

- CD with Remote-Display-Software and data set visualisation
- RS232 interface module



1 Short Instruction

The Remote-Display-Software serves as remote control of the Lambda-Transmitter LT1 and LT2 as well as for securing the data record and for restoring the data record.

The Remote-Display-Software shows the same operation as the display-and operating unit on the LT itself. With the mouse, the menu click-buttons, the cursor click-buttons and the enter click-button can be actuated (see manual "supplement to the operating instruction for option "Display- and operating unit").

New functions from version 2.0.0:

Protected data sets can be restored and backedup (file extension .pLT1, .pLT2).

Uring restoring, the history datas, the operating hours counter and the serial number are not written.

Protected data sets cannot be written in the LT, if it already is in the factory level, then it is however possible to write the data set as normal data set.

Protected data sets are secured by several check totals, i.e.. normal data sets cannot be used by renaming as protected data sets.

A protected data set cannot be changed.

Protected data sets are put on, in order to repair a configuration in exchange equipment.

Language selection GERMAN / ENGLISH / FRENCH



NOTE

As to the LT1, the Remote-Display-Software can only be used from Software version 1V38.

2 Installation

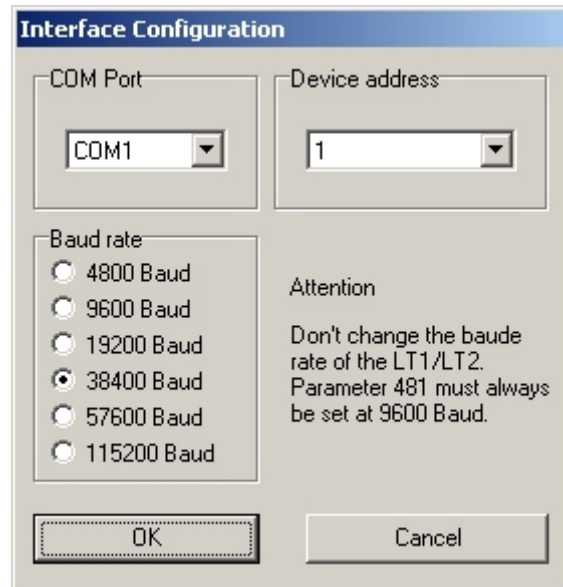
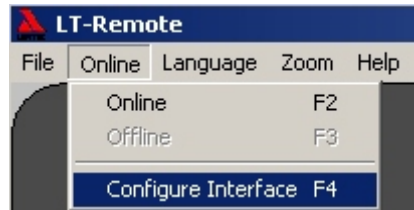
For installing the software, start the file "LT_Remotedisplay v X.X.X.exe". Choose "language" and "Create a desktop icon".

The required files are automatically unpacked into the directory "C:\Programme\Lamtec\LT Remote Display".

The software can be started by a double -click on the desktop icon or out of the Windows-Explorer „C:\Programme\Lamtec\LT Remote Display\LTRemote.exe“.

3 Configuration

The used interface and its configuration is set in the menu "Online->Configure interface"



Should there arise any conflicts with other devices when accessing the interface configuration. Please see "Appendix: Help for Problem Solving", page 9.

4 Language

The language can be changed over in the menu "language".



Contact with the Connected LT

5 Contact with the LT

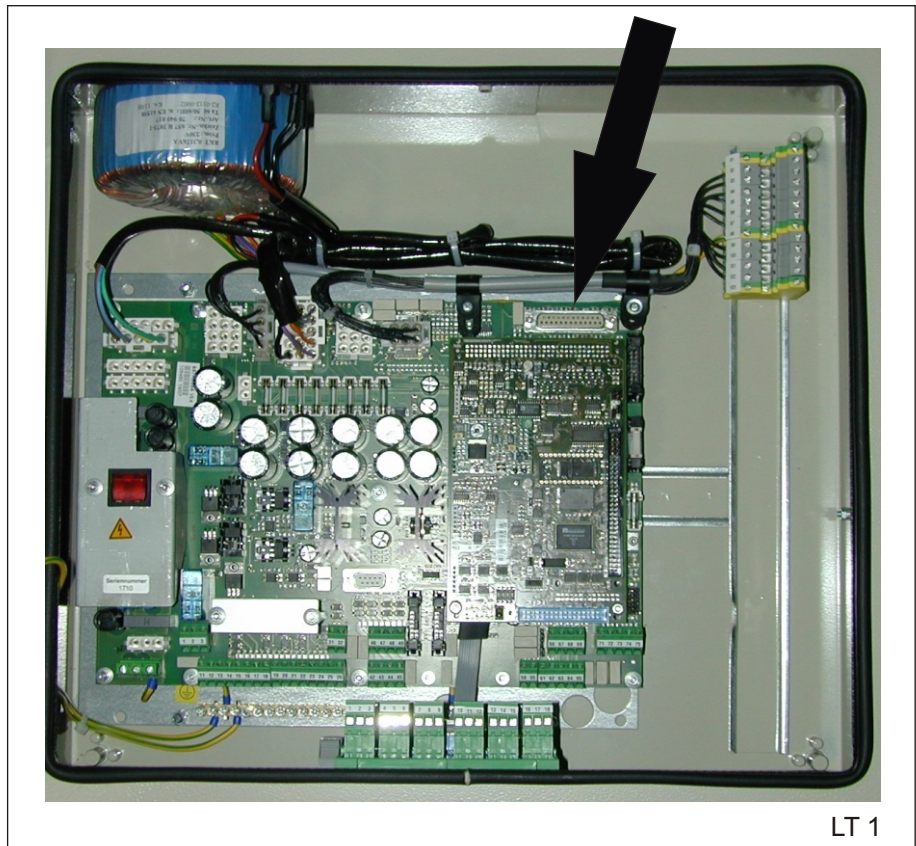
The Remote-Display-Software can only be used with a RS232 interface module and a serial interface connecting cable.
The cable is not contained in the scope of supply.

Pluggin RS232 interface module and connect it with your PC.



ATTENTION !

The RS232-interface module is only to be plugged on or off when the LT is switched off.





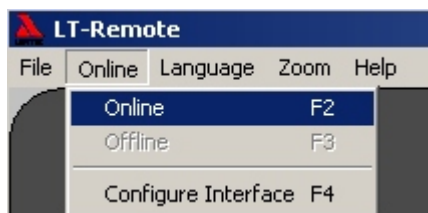
LT 2



LT 2 - panel mounting

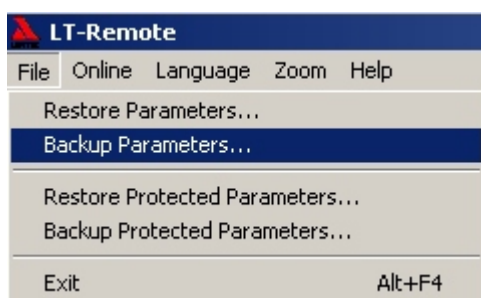
As to the parity setting on the LT 1, make sure that the setting " Auto/e/n) " (parameter 482) has been selected, on the LT 2 the parity setting " Non " (parameter 482) is correct.

For setting the software online, select the menu icon "Online->Online".



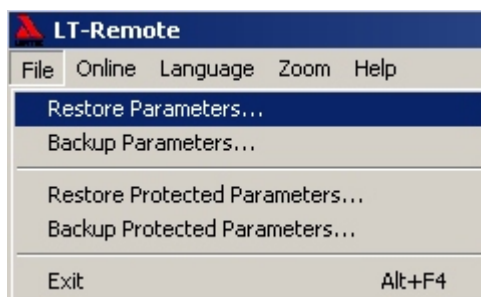
5.1 Establishing a Back Up of the Data

For establishing a back up, select the menu icon " File->Bachup Parameters". Doing this, make sure that the synchronization of the parameters is finished (noticeable at the status "online").



5.2 Writing Data into the Device


In order to write a data record back into the LT, you should first enter the password of the corresponding release level into the LT. After that, select the menu icon "File->Restore Parameters"



Appendix Help for Problem Solving

a) Accessing the interface configuration

When accessing the interface configuration, the serial interfaces of the PC are automatically checked as to their availability. Should there arise any conflicts with other devices when accessing the interface configuration, individual serial interfaces may be excluded from the automatic checking. The manual cut-off of the checking of individual ports is possible in file "LTRemote.ini". In the example, the checking of the serial interface 1 is switched off: "ExcludePort1=1". The serial interface 2 as interface for the communication with the LT is being switched on: "Port=2".



```
LTRemote.ini - Editor
Datei Bearbeiten Suchen ?
[WINDOWS-800x600]
Position X=10
Position Y=10
Zoom=200

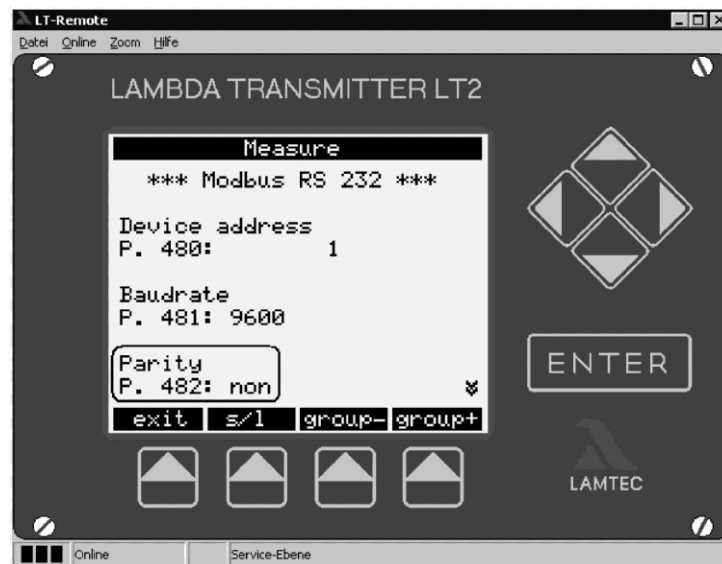
[PORT]
LT_Device=2
SleepTime=10
StartupBaud=9600
Parity=N
MaxPort=8
Port=2
SlaveAddress=1
Baud=38400
ExcludePort1=1
ExcludePort2=0
ExcludePort3=0
ExcludePort4=0
```

Appendix Help for Problem Solving

b) Configuration of serial interface LT2

Standard parameters from LT2 software version 1v00 :

Parameter 480: 1 equipment address
Parameter 481: 9600 baud rate
Parameter 482: no parity



Standard parameters up to LT2 software version 0v11:

Parameter 480: 1 equipment address
Parameter 481: 9600 baud rate
Parameter 482: even parity

In the case of devices with software versions up to 0v11, the parity of the interface is set to "even". If the device has a display and operating unit, then parameter 482 can be changed to "no parity".



ATTENTION !

The change will not be carried out until the device has been switched off and back on again!

If there is no display and operating unit provided on the device, then the parity can be changed for the remote display software (see modifying the parity of the remote display software).



Appendix Help for Problem Solving

c) Modifying the parity of
the remote display software

The parity of the remote display software can be modified in the file
"LTRemote.ini".

Standard setting: "Parity=N"

The parity of the remote display software can be set to even by entering
"Parity=E".




A screenshot of a Windows Notepad window titled "LTRemote.ini". The window contains the following text:

```
[WINDOWS-800x600]
Position X=10
Position Y=10
Zoom=200

[PORT]
LT_Device=2
SleepTime=10
StartupBaud=9600
Parity=E
MaxPort=8
Port=1
SlaveAddress=1
Baud=38400
ExcludePort1=0
ExcludePort2=0
ExcludePort3=0
ExcludePort4=0
```

The text "Parity=E" is circled in red.



A screenshot of a Windows Notepad window titled "LTRemote.ini". The window contains the following text:

```
[WINDOWS-800x600]
Position X=10
Position Y=10
Zoom=200

[PORT]
LT_Device=2
SleepTime=10
StartupBaud=9600
Parity=N
MaxPort=8
Port=1
SlaveAddress=1
Baud=38400
ExcludePort1=0
ExcludePort2=0
ExcludePort3=0
ExcludePort4=0
```

The text "Parity=N" is circled in red.



**LAMTEC Meß- und Regeltechnik
für Feuerungen GmbH & Co KG**

Wiesenstraße 6
D-69190 Walldorf
Telephone: (+49) 0 62 27 / 60 52-0
Telefax: (+49) 0 62 27 / 60 52-57
Internet: <http://www.lamtec.de>
email: info@lamtec.de

LAMTEC Leipzig GmbH & Co KG

Schlesierstraße 55
D-04299 Leipzig
Telephone: (+49) 03 41 / 86 32 94 00
Telefax: (+49) 03 41 / 86 32 94 10

Presented by:

Print no. DLT1004-08-aE-0005
Printed in Germany